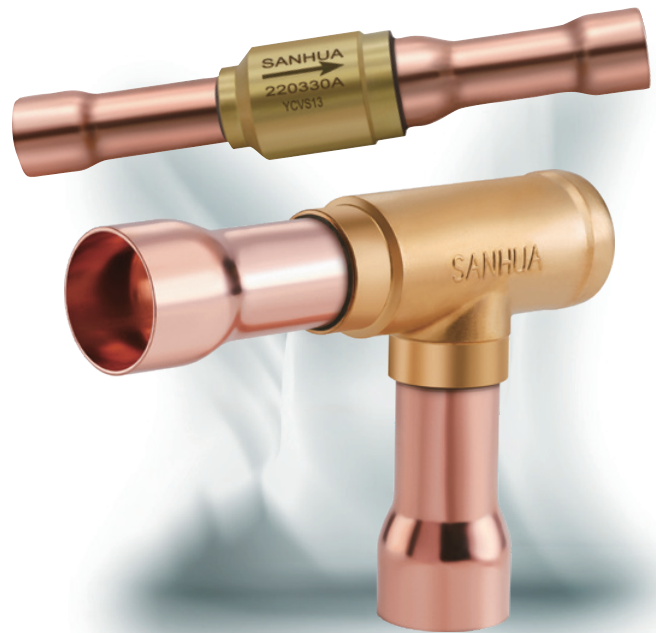


## YCVS SERIES

# Check Valve Piston Type

Piston type check valves are designed for installation in commercial refrigerating systems and in residential or industrial air conditioning plants. They are used to control the unidirectional flow of refrigerant so as to prevent backflow.



### FEATURES

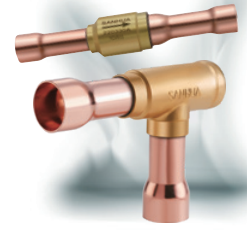
- THIS VALVE CAN ENSURE THE ONLY CORRECT FLOW DIRECTION
- EQUIPPED WITH DAMPING SPRING TO FREELY INSTALL THE VALVE AT POSITIONS WITH PRESSURE PULSE
- AVAILABLE IN TWO TYPES OF MODEL: STRAIGHTWAY VALVE AND L-SHAPE VALVE, EASY TO CONNECT
- SPECIAL VERSION OF CHECK VALVE EQUIPPED WITH REINFORCED SPRING AVAILABLE, APPLICABLE TO COMPRESSOR DISCHARGE PIPES IN SINGLE OR MULTI COMPRESSOR SYSTEMS (YCVSH SERIES)

### GENERAL SPECIFICATIONS

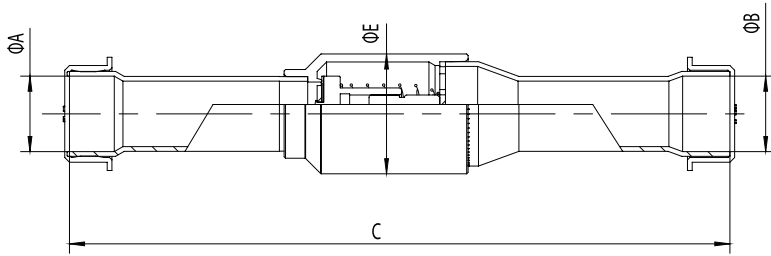
- Applicable for all common HCFC, HFC refrigerants such as: R22, R134a, R410A
- Medium temperature TS min./max.: -50°C / +140°C
- Max. operating pressure PS: 4,6 MPa (46 bar)
- Declaration according to PED
- UL certification

# YCVS SERIES

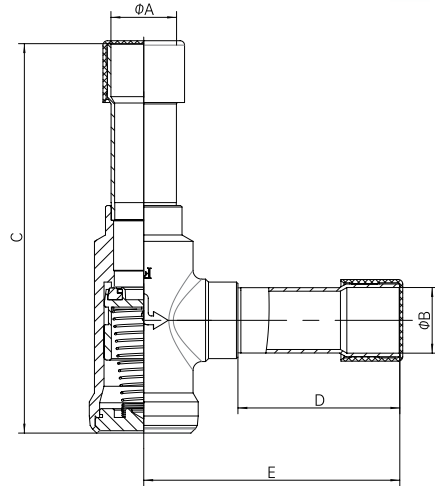
## Check Valve Piston Type



### TECHNICAL PARAMETER



Straight-way (YCVS2~YCVSH7)



L-shape(YCVS 20~YCVSH 31)

Connections ODF $\phi d$	Imperial	Dimensions ODF $\phi d$	Metric	Kv	Min. OPD (Vapor)	C	E
[inch]	Model	[mm]	Model	[m <sup>3</sup> /h]	[kPa]	[mm]	[mm]
1/4	YCVS2H01	6	YCVS2H02	0.56	5	90	17
3/8	YCVS3H01	10	YCVS3H02	1.6	5	110	17
3/8	YCVSH3H01	10	YCVSH3H02	1.6	15	110	17
1/2	YCVS4H01	12	YCVS4H02	2.64	5	130	21
1/2	YCVSH4H01	12	YCVSH4H02	2.64	15	130	21
5/8	YCVS5H03	16	YCVS5H03	4	5	140	23.4
5/8	YCVSH5H03	16	YCVSH5H03	4	15	140	23.4
3/4	YCVS6H03	19	YCVS6H03	6.8	5	140	30
3/4	YCVSH6H03	19	YCVSH6H03	6.8	15	140	30
7/8	YCVS7H03	22	YCVS7H03	6.8	5	165	30
7/8	YCVSH7H03	22	YCVSH7H03	6.8	15	165	30
7/8	YCVS20-77GSHC-1	22	YCVS20-77GSHC-1	13.09	10	132	87
7/8	YCVSH20-77GSHC-1	22	YCVSH20-77GSHC-1	13.09	30	132	87
1-1/8	YCVS26-99GSHC-1	28	YCVS26-88GSHC-1	18.86	10	196	123
1-1/8	YCVSH26-99GSHC-1	28	YCVSH26-88GSHC-1	18.86	30	196	123
1-3/8	YCVS31-BBGSHC-1	35	YCVS31-BBGSHC-1	28.86	10	196	124
1-3/8	YCVSH31-BBGSHC-1	35	YCVSH31-BBGSHC-1	28.86	30	196	124
1-5/8	YCVS31-DDGSHC-1	42	YCVS31-DDGSHC-2	28.86	10	196	124
1-5/8	YCVSH31-DDGSHC-1	42	YCVSH31-DDGSHC-2	28.86	30	196	124

Note: Piston type check valve could not used at enhanced vapor injection circuit